

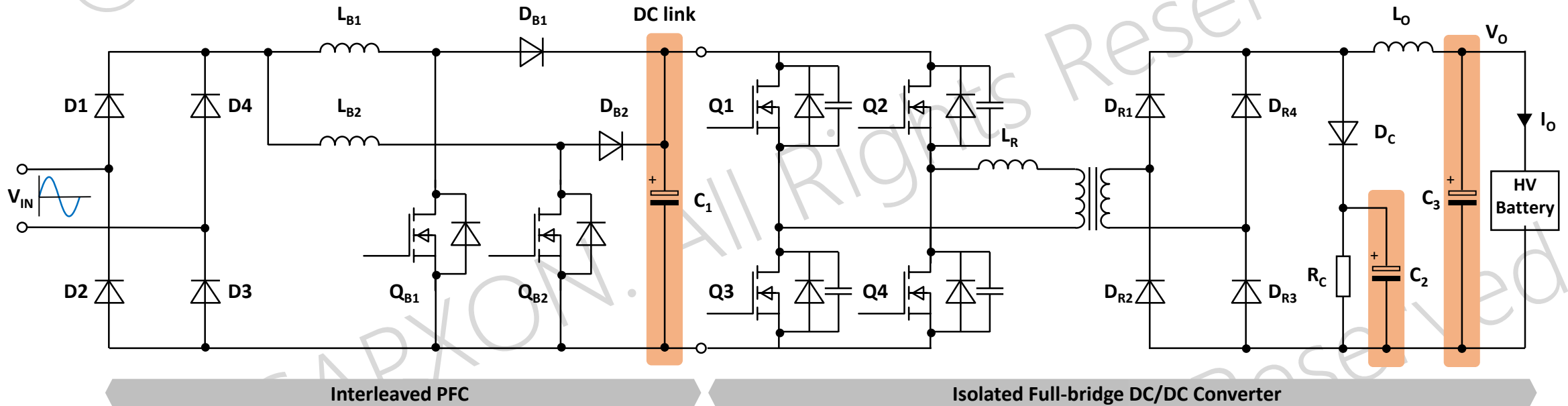
Automotive



On board charger

Function	Filtering
Request on the capacitor	High voltage
	High ripple current
	Low ESR
	Long life
Recommended series	KF, KH

3.3kW On board charger – Layout example



Designator	Circuit	Purpose	Specification	Recommended series	Partnumber	Manufacturer
C1	Interleaved PFC	Inductor ripple current filtering	E-Cap 82μF, 450V, +/-20%, 0.2 Ohm, AEC-Q200, D18xL35.5, Radial	KH	KH820M450K355ETEX	CapXon
C2	Fullbridge DC/DC	Clamp voltage ringing of diode junction cap. with transformer leakage inductance	E-Cap 3.3μF, 450V, +/-20%, AEC-Q200, D10xL16, Radial	KF	KF3R3M450G160ETHX	CapXon
C3	Fullbridge DC/DC	Low pass filtering	E-Cap 33μF, 450V, +/-20%, 0.99A@100kHz AEC-Q200, D16x25, Radial	KH	KH330M450J250ETEX	CapXon